

BASIC SILO



We safeguard your raw materials...



Morrevej 7, DK-7500 Holstebro | T +45 97 43 50 66 | F +45 97 43 50 49 | www.bmsilo.com | info@bmsilo.com



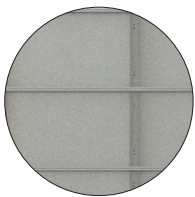
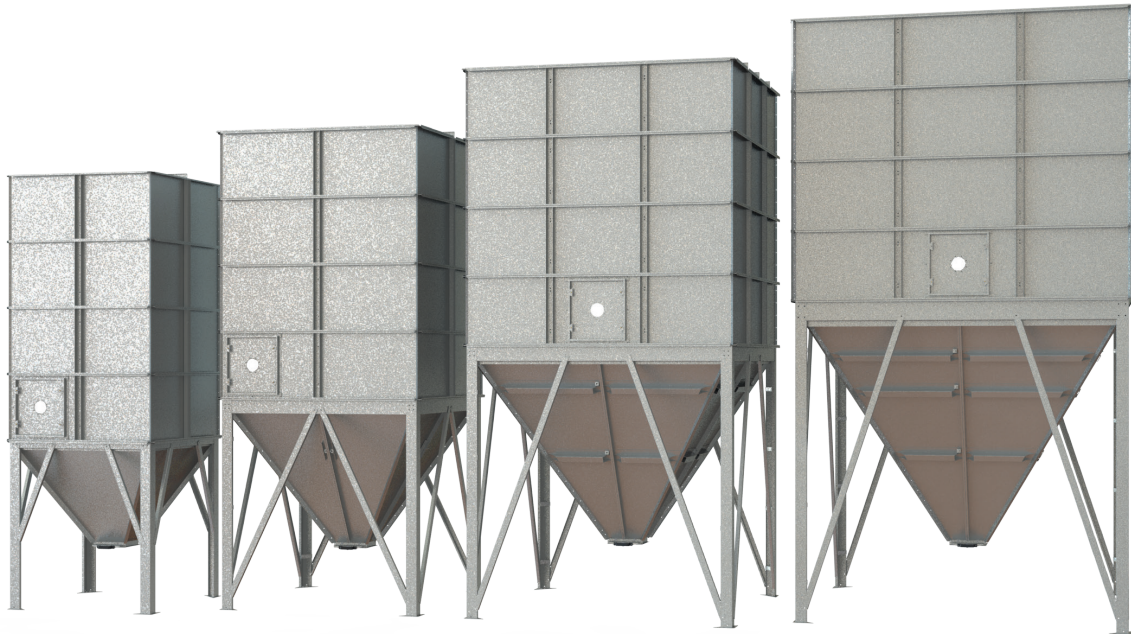


BASIC SILO



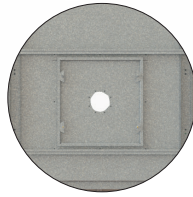
BM BASIC SILO

With over 50 years of experience with engineering and crafting, we have created the Basic silo. The optimized design for material densities up to 650 kg/m³ combined with our modern production facility gives a price-attractive silo for the basic storage need. With various sizes of square silos, you get great space utilization, hygiene, and high durability. The Basic series cannot be customized but can be fitted with accessories such as transitions, load cells, industrial slide gates, tubes, vibrators and two-way valves etc.



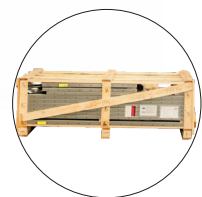
HOT-DIP GALVANIZED

All panel sections on this silo are galvanized to give a long service life. The smooth steel walls ensure good internal hygiene and optimum silo discharge. The panels can withstand high-pressure cleaning.



INSPECTION HATCH

with inspection window is always included with the Basic silo.



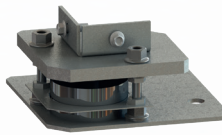
COMPACT KIT

It is well known that the silos at BM Silo are delivered as kits that are stackable. All our products can be delivered to any destination and can fit through a standard door.

ACCESSORIES FOR THE BASIC SILO



LIFTING HOOKS



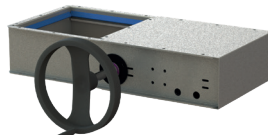
LOAD CELLS



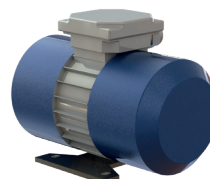
SUCTION BOXES



TRANSITIONS



SLIDE GATES



VIBRATORS



Basic silo

60° hopper bottom, 650 kg/m³

Silo	Specifications			Silo with cover	Silo with cover, filter and injection**	
	Illustration [mm]	Height [m]	Volume [m ³]	Content [T] 650 kg/m ³	Part no. Part no.	
B-150		1.65*	0.87	0.57	4.13.8160	
		2.28	2.19	1.43	4.13.8260	4.23.8260
		2.91	3.52	2.29	4.13.8360	4.23.8360
		3.51	4.84	3.15	4.13.8460	4.23.8460
		4.17	6.17	4.01	4.13.8560	4.23.8560
		4.80	7.49	4.87	4.13.8660	4.23.8660
		5.43	8.82	5.73	4.13.8760	4.23.8760
		6.06	10.14	6.59	4.13.8860	4.23.8860
		6.69	11.47	7.45	4.13.8960	4.23.8960
B-200		2.06*	2.13	1.38	4.14.8160	
		2.69	4.53	2.94	4.14.8260	4.24.8260
		3.32	6.92	4.50	4.14.8360	4.24.8360
		3.95	9.32	6.06	4.14.8460	4.24.8460
		4.58	11.71	7.61	4.14.8560	4.24.8560
		5.21	14.11	9.17	4.14.8660	4.24.8660
		5.84	16.50	10.73	4.14.8760	4.24.8760
		6.47	18.90	12.28	4.14.8860	4.24.8860
		7.10	21.29	13.84	4.14.8960	4.24.8960
	7.73	23.68	15.39	4.14.9060	4.24.9060	

Silo	Specifications			Silo with cover	Silo with cover, filter and injection**	
	Illustration [mm]	Height [m]	Volume [m ³]	Content [T] 650 kg/m ³	Part no. Part no.	
B-250		2.56*	4.24	2.76	4.15.8160	
		3.19	8.02	5.21	4.15.8260	4.25.8260
		3.82	11.80	7.67	4.15.8360	4.25.8360
		4.45	15.58	10.13	4.15.8460	4.25.8460
		5.08	19.38	12.59	4.15.8560	4.25.8560
		5.71	23.15	15.05	4.15.8660	4.25.8660
		6.37	26.93	17.50	4.15.8760	4.25.8760
		6.97	30.71	19.95	4.15.8860	4.25.8860
		7.60	34.49	22.42	4.15.8960	4.25.8960
	8.23	38.27	24.87	4.15.9060	4.25.9060	
	8.86	42.05	27.33	4.15.9160	4.25.9160	
B-300		2.96*	7.03	4.57	4.16.8160	
		3.48	12.33	8.01	4.16.8260	4.26.8260
		4.22	17.63	11.46	4.16.8360	4.26.8360
		4.85	22.92	14.90	4.16.8460	4.26.8460
		5.48	28.22	18.35	4.16.8560	4.26.8560
		6.11	33.52	21.79	4.16.8660	4.26.8660
		6.74	38.82	25.23	4.16.8760	4.26.8760
		7.37	44.12	28.68	4.16.8860	4.26.8860
		8.00	49.42	32.12	4.16.8960	4.26.8960
	8.63	54.82	35.56	4.16.9060	4.26.9060	
	9.26	60.02	39.01	4.16.9160	4.26.9160	

*Excluding inspection door

**Add 120 mm to height

4 mm legs

Max flow 62 m³/hour for type 250

Max flow 85 m³/hours for type 300

The silo must be emptied and filled from the centre

Basic silo

45° hopper bottom, 650 kg/m³

Silo	Specifications			Silo with cover	Silo with cover, filter and injection**	
	Illustration [mm]	Height [m]	Volume [m ³]	Content [T] 650 kg/m ³	Part no. Part no.	
B-150		1.26*	0.50	0.33	4.13.8145	
		1.89	1.82	1.19	4.13.8245	4.23.8245
		2.52	3.15	2.05	4.13.8345	4.23.8345
		3.15	4.47	2.91	4.13.8445	4.23.8445
		3.78	5.80	3.77	4.13.8545	4.23.8545
		4.41	7.12	4.63	4.13.8645	4.23.8645
		5.04	8.45	5.49	4.13.8745	4.23.8745
		5.67	9.77	6.34	4.13.8845	4.23.8845
		6.30	11.10	7.21	4.13.8945	4.23.8945
B-200		1.56*	1.23	0.79	4.14.8145	
		2.19	3.63	2.63	4.14.8245	4.24.8245
		2.82	6.02	3.91	4.14.8345	4.24.8345
		3.45	8.42	5.47	4.14.8445	4.24.8445
		4.08	10.81	7.03	4.14.8545	4.24.8545
		4.71	13.21	8.59	4.14.8645	4.24.8645
		5.34	15.60	10.14	4.14.8745	4.24.8745
		5.97	18.00	11.70	4.14.8845	4.24.8845
		6.60	20.39	13.26	4.14.8945	4.24.8945
	7.23	22.80	14.82	4.14.9045	4.24.9045	

Silo	Specifications			Silo with cover	Silo with cover, filter and injection**	
	Illustration [mm]	Height [m]	Volume [m ³]	Content [T] 650 kg/m ³	Part no. Part no.	
B-250		1.76*	2.45	1.59	4.15.8145	
		2.39	6.23	4.05	4.15.8245	4.25.8245
		3.02	10.01	6.51	4.15.8345	4.25.8345
		3.65	13.79	8.97	4.15.8445	4.25.8445
		4.28	17.58	11.42	4.15.8545	4.25.8545
		4.91	21.36	13.88	4.15.8645	4.25.8645
		5.54	25.14	16.34	4.15.8745	4.25.8745
		6.17	28.92	18.80	4.15.8845	4.25.8845
		6.80	32.70	21.26	4.15.8945	4.25.8945
	7.43	36.48	23.70	4.15.9045	4.25.9045	
	8.06	40.26	26.17	4.15.9145	4.25.9145	
B-300		1.96*	4.06	2.64	4.16.8145	
		2.59	9.36	6.08	4.16.8245	4.26.8245
		3.22	14.66	9.53	4.16.8345	4.26.8345
		3.85	19.95	12.97	4.16.8445	4.26.8445
		4.48	25.25	16.41	4.16.8545	4.26.8545
		5.11	30.55	19.86	4.16.8645	4.26.8645
		5.74	35.85	23.30	4.16.8745	4.26.8745
		6.37	41.15	26.75	4.16.8845	4.26.8845
		7.00	46.45	30.19	4.16.8945	4.26.8945
	7.63	51.75	33.64	4.16.9045	4.26.9045	
	8.26	57.05	37.08	4.16.9145	4.26.9145	

*Excluding inspection door

**Add 120 mm to height

4 mm legs

Max flow 62 m³/hour for type 250

Max flow 85 m³/hours for type 300

The silo must be emptied and filled from the centre